

Safer Neighbourhood Board Presentation on Knife Crime 20th July 2017

Introduction.

Enfield Borough saw a spike in knife crime victims >25 in May 2016 which sadly included two knife enabled murders.

Presentation will show:

- Problem profile
- MPS comparisons. Knife Injury Victims under or over 25 years old.
- Knife injury victim trends in Enfield this year.
- Breakdown of Enfield Borough offences and key performance indicators.
- Current knife crime hotspots, and
- Summary of plan to tackle and continue to reduce knife crime in Enfield Borough.
- Case study. Results from Op Sceptre 8 – May.

Problem Summary



In summary.

Majority of knife crime victims are:

- Afro-Caribbean
- Aged 15-19 years old.
- As a result of a GBH with intent rather than robbery or other offences.

Majority of offences occur:

- On Wednesday's, Saturday's and Sunday.
- Peak time for offences is 2200 hrs
- In Edmonton Green Ward

Knife Injury Victims under 25 years old.

Knife Injury Victims<25 (Non-DV)	Current month			RY compared to same period last year				Gang-Related for the same RY comparable period		
Owning BOCU	Volume to 16 June 2017	Volume to 16 June 2016	% change	RY 17 June 16 - 16 June 17	RY 18 June 15 - 16 June 16	Volume Diff	% change	RY 17 June 16 - 16 June 17	RY 18 June 15 - 16 June 16	% Gang-Related
ZD - Croydon**	5	2	150.00%	108	64	+44	+68.8%	19	15	17.6%
YE - Enfield**	4	5	-20.00%	89	47	+42	+89.4%	27	12	30.3%
CW - City of Westminster**	1	2	-50.00%	76	34	+42	+123.5%	18	13	23.7%
MD - Southwark**	10	4	150.00%	134	77	+40	+51.9%	24	11	17.9%
QK - Brent**	1	1	0.00%	93	57	+36	+63.2%	17	14	18.3%
LX - Lambeth**	7	4	75.00%	131	101	+30	+29.7%	40	40	30.5%
QA - Harrow	3	1	200.00%	47	21	+26	+123.8%	8	4	17.0%
KF - Newham**	4	3	33.33%	111	93	+18	+19.4%	12	18	10.8%
FH - Hammersmith & Fulham	2	1	100.00%	41	27	+14	+51.9%	10	5	24.4%
BS - Kensington & Chelsea	0	0	0.00%	38	26	+12	+46.2%	11	5	28.9%
EK - Camden**	4	2	100.00%	63	51	+12	+23.5%	15	20	23.8%
PY - Bromley	1	1	0.00%	38	26	+12	+46.2%	6	6	15.8%
GD - Hackney**	6	6	0.00%	89	77	+12	+15.6%	41	42	46.1%
JI - Redbridge	2	1	100.00%	63	52	+11	+21.2%	7	8	11.1%
JC - Waltham Forest**	10	3	233.33%	64	53	+11	+20.8%	21	23	32.8%
NI - Islington**	6	6	0.00%	80	71	+9	+12.7%	37	30	46.3%
VK - Kingston-upon-Thames	0	3	-100.00%	21	13	+8	+61.5%	1	0	4.8%
XH - Hillingdon	3	2	50.00%	45	37	+8	+21.6%	10	7	22.2%
TX - Hounslow	3	2	50.00%	62	55	+7	+12.7%	7	5	11.3%
TW - Richmond-upon-Thames	0	0	0.00%	17	11	+6	+54.5%	0	0	0.0%
KD - Havering	1	0	100.00%	30	24	+6	+25.0%	2	4	6.7%
RY - Bexley	2	1	100.00%	19	13	+6	+46.2%	1	2	5.3%
YR - Haringey**	5	5	0.00%	90	85	+5	+5.9%	28	30	31.1%
RG - Greenwich**	2	1	100.00%	71	66	+5	+7.6%	16	22	22.5%
ZT - Sutton	0	0	0.00%	22	19	+3	+15.8%	1	2	4.5%
WW - Wandsworth**	1	2	-50.00%	42	40	+2	+5.0%	9	17	21.4%
XB - Ealing**	2	4	-50.00%	59	59	0	0.0%	9	5	15.3%
PL - Lewisham**	2	3	-33.33%	78	80	-2	-2.5%	16	20	20.5%
VW - Merton	0	1	-100.00%	26	31	-5	-16.1%	1	7	3.8%
HT - Tower Hamlets**	4	10	-60.00%	99	107	-8	-7.5%	27	50	27.3%
KG - Barking & Dagenham**	1	0	100.00%	51	64	-13	-20.3%	11	14	21.6%
SX - Barnet	3	4	-25.00%	46	66	-20	-30.3%	15	28	32.6%
Grand Total	95	80	18.75%	2,043	1,647	+396	+24.0%	467	479	22.9%
EGYV Boroughs				1528	1226	+302	+24.6%	387	396	25.3%
Non-EGYV Boroughs				515	421	+94	+22.3%	80	83	15.5%
% Gang-Related				22.9%	29.1%					

In summary.

- Enfield are in top three worsening Borough's by volume due to volume difference comparison. In the rolling year Enfield has seen an increase of 42 victims.
- In June 2017 Enfield had a reduction of 20% in offences compared to June last year.
- In Enfield 30.3% of offences where victims were injured by knives were Gang related.

Knife Injury Victims over 25 years old.

Knife Injury Victims>25 (Non-DV)	Current month			RY compared to same period last year				Gang-Related for the same RY comparable period		
	Owning BOCU	Volume to 16 June 2017	Volume to 16 June 2016	% change	RY 17 June 16 - 16 June 17	RY 18 June 15 - 16 June 16	Volume Diff	% change	RY 17 June 16 - 16 June 17	RY 18 June 15 - 16 June 16
MD - Southwark**	6	2	200.00%	112	66	+40	+60.6%	2	3	1.8%
ZD - Croydon**	2	2	0.00%	84	47	+37	+78.7%	6	3	7.1%
LX - Lambeth**	4	2	100.00%	111	74	+37	+50.0%	6	2	5.4%
EK - Camden**	2	2	0.00%	70	40	+30	+75.0%	5	4	7.1%
QK - Brent**	5	8	-37.50%	101	73	+28	+38.4%	5	6	5.0%
XH - Hillingdon	2	1	100.00%	48	21	+27	+128.6%	5	3	10.4%
PL - Lewisham**	6	5	20.00%	94	70	+24	+34.3%	5	2	5.3%
JC - Waltham Forest**	4	3	33.33%	77	56	+21	+37.5%	7	5	9.1%
GD - Hackney**	3	2	50.00%	93	75	+18	+24.0%	14	14	15.1%
YE - Enfield**	3	3	0.00%	62	45	+17	+37.8%	11	4	17.7%
FH - Hammersmith & Fulham	3	0	100.00%	40	24	+16	+66.7%	2	2	5.0%
NI - Islington**	5	4	25.00%	74	58	+16	+27.6%	9	7	12.2%
CW - City of Westminster**	5	5	0.00%	88	73	+15	+20.5%	6	4	6.8%
QA - Harrow	1	1	0.00%	41	26	+15	+57.7%	2	1	4.9%
PY - Bromley	3	0	100.00%	38	24	+14	+58.3%	2	0	5.3%
TX - Hounslow	2	1	100.00%	58	44	+14	+31.8%	0	0	0.0%
JI - Redbridge	5	0	100.00%	73	60	+13	+21.7%	1	5	1.4%
YR - Haringey**	5	5	0.00%	100	87	+13	+14.9%	16	5	16.0%
TW - Richmond-upon-Thames	0	0	0.00%	18	10	+8	+80.0%	1	0	5.6%
KD - Havering	1	0	100.00%	26	18	+8	+44.4%	0	0	0.0%
WW - Wandsworth**	1	2	-50.00%	55	48	+7	+14.6%	2	1	3.6%
RY - Bexley	2	1	100.00%	21	15	+6	+40.0%	1	0	4.8%
HT - Tower Hamlets**	1	4	-75.00%	74	68	+6	+8.8%	7	13	9.5%
VW - Merton	3	0	100.00%	26	23	+3	+13.0%	0	2	0.0%
BS - Kensington & Chelsea	2	0	100.00%	34	33	+1	+3.0%	2	2	5.9%
RG - Greenwich**	0	2	-100.00%	45	44	+1	+2.3%	6	10	13.3%
VK - Kingston-upon-Thames	2	0	100.00%	10	13	-3	-23.1%	0	0	0.0%
XB - Ealing**	3	3	0.00%	83	86	-3	-3.5%	0	4	0.0%
KG - Barking & Dagenham**	2	1	100.00%	54	57	-3	-5.3%	2	6	3.7%
SX - Barnet	3	0	100.00%	44	47	-3	-6.4%	6	6	13.6%
KF - Newham**	4	6	-33.33%	102	111	-9	-8.1%	9	9	8.8%
ZT - Sutton	2	2	0.00%	11	20	-9	-45.0%	0	0	0.0%
Grand Total	92	67	37.31%	1,967	1,556	+411	+26.4%	140	123	7.1%
EGYV Boroughs				1479	1178	+301	+25.6%	118	102	8.0%
Non-EGYV Boroughs				488	378	+110	+29.1%	22	21	4.5%
% Gang-Related				7.1%	7.9%					

In summary.

- Enfield are 10th wop worsening Borough due to volume difference comparison. In the rolling year Enfield has seen an increase of 17 >25 year old victims.
- In June 2017 Enfield exactly the same number of offences compared to June last year.
- In Enfield 17.7% of offences where victims > 25 were injured by knives were Gang related.

Trends.

Crimes reporting Knife crime with injury caused, reported on Enfield Borough:

March 2017 = 7

April 2017 = 11

May 2017 = 16 (Including 2 murders)

June 2017 = 10

July 2017 = 7 to date (17/7/17)

Total Knife Crime in Enfield

Offences Previous R12 = 418

Offences Current R12 = 487

Offences change = **+ 16.5% Increase of 69 Offences**

KIV's* <25 excluding DA R12**

Victims Previous R12 = 45

Victims Current R12 = 89

Victims changes = 37 more victims = **97.8% increase for R12.**

KIV's <25 excluding DA Monthly comparison

June 2016 = 9

June 2017 = 6

3 less victims <25 which is a **-33% decrease on the same month last year**

(Reporting period ending 17th July 2017)

(* = KIV<25 = Knife Injury Victims under 25 years old)

(**R12 = In a rolling 12 months period)

Location/s.

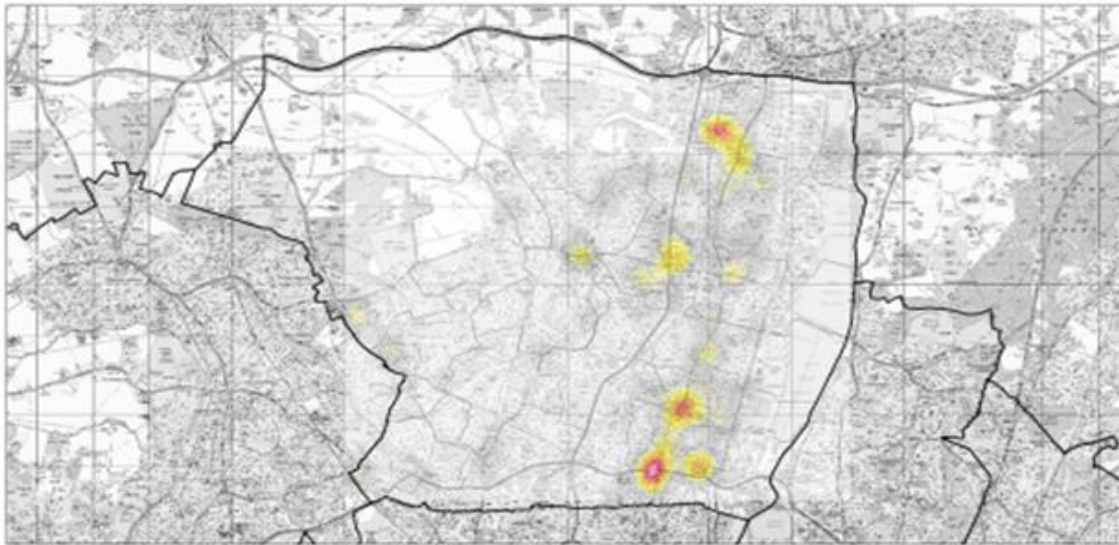
Locations have been identified in:

- Three month hotspot map, (Feb to May 17) &
- Hotspot Map for Knife Crime Offences (excluding DA) produced for the period 16th January to 10th April 2016 (12 week period) to support Gang's Unit deployments.

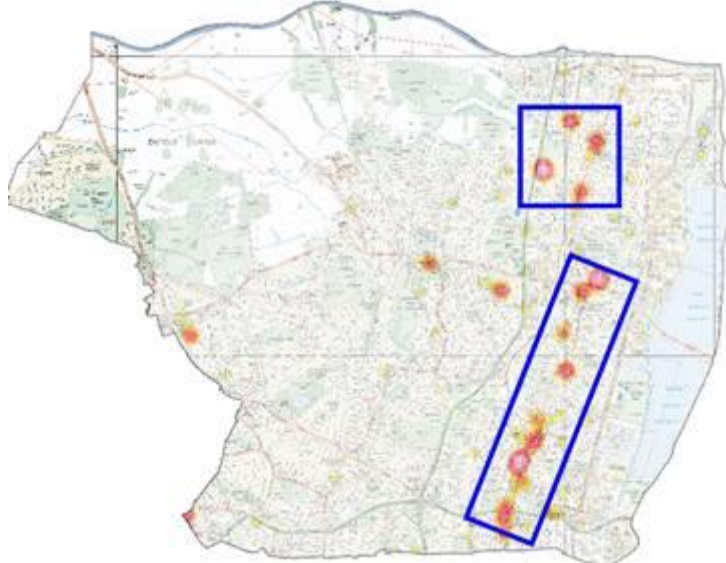
Key findings and Key Locations –

- Edmonton Green is the busiest ward with Hertford Road being the busiest street.

Enfield Knife Crime – 3 months



Enfield Knife Crime previous three months prior to 9th May 2017 Knife Crime in Enfield for the period 16th January to 10th April 2016 (12 week period)



Knife crime position

MPS Performance Indicators for Enfield Borough.

Sanctioned Detections for Total Knife Crime

SD's previous R12 = 118 SD's – 28.2% SD rate

SD's current R12 = 111 SD's – 22.8% SD rate

SD change = **-5.4% - 7 less SD's.**

Habitual Knife Carriers

Currently Enfield Borough has:

- 1 High Risk,
- 4 Medium Risk and
- 17 Low Risk

Habitual Knife Carriers:

Hypothesis.

Although there is currently no empirical evidence to support this it is suspected reason for increase in knife crime is an unstable drug market within Enfield Borough.

Op Denver was a joint Trident/Gangs unit operation that successfully targeted one of the main London gangs in the borough (DA – Dem Africans). This has resulted in many of the senior leaders being recently charged/remanded. It is highly probable that much of the resulting violence has been a combination of turfs wars over the territory with the younger gang members attempting to establish more prominence/rank within the resulting vacuum.

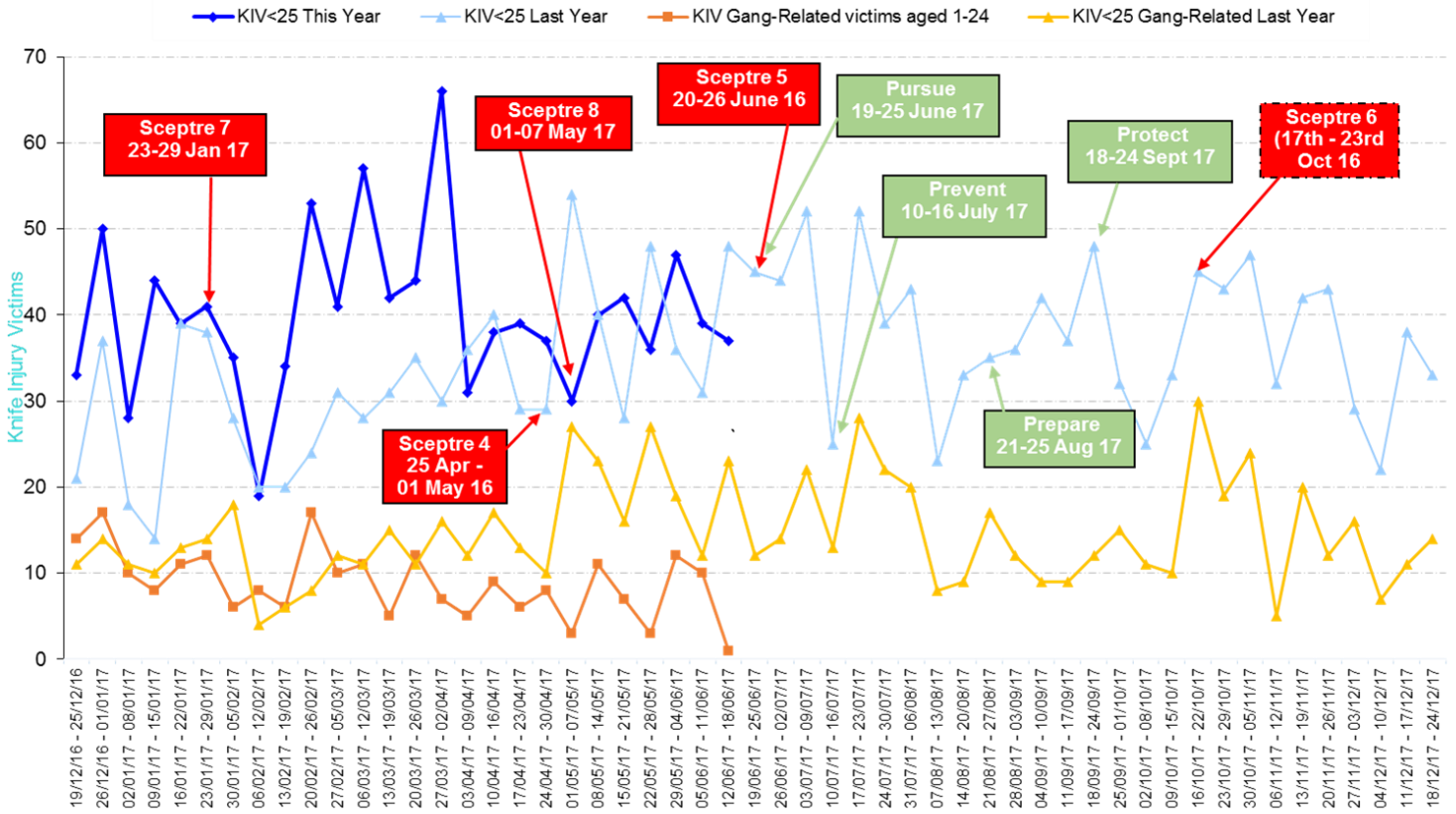
The reason this is suspected is due to:

- Less Gang related knife crime.
- Fewer victims willing to report or assist police investigations.
- Intelligence suggesting disputes over drug territories.

1. What are we doing?

- Each Nominal, High Risk HKC has a Three Point Plan which details minimum standards for Subject profile, Prevention & Proactive activity.
- Each Nominal has been allocated to Investigating Officers to progress weekly.
- New Enfield Borough Knife Crime Plan
- New briefing/tasking format to maximise intelligence led patrolling for Gang's Unit.
- New Key Intelligence Tracker to maximise and expedite intelligence led proactive opportunities.
- Op Bremont
- Op Sceptre monthly
- Pro-actively seeking sec 60 search powers and TSG support in response to any intelligence suggesting SYV.
- Identifying peak offending times and preparing suitable plans for disruption, Op Sceptre. (i.e Notting Hill)

Knife Injury Victims aged 1-24 non-DA & Gang-Related



Enfield Borough Knife Crime Plan Summary

The Plan for Enfield.

The plan to tackle knife crime in Enfield is based on five key points in each of the 4P's format and the following is being undertaken or planned imminently.

Prevent

1. Regular & effective test purchase operations & consequences incorporating trading standards to reduce availability of knives.
2. Op Crest & Op Assure which are bespoke School Diversion/Engagement Approaches delivered by YE Gang's Unit and Junior Citizen being delivered by YE Safer Schools supported by Trident Community Engagement.
3. Increased profile of anti-knife crime information on Social Media to promote Police commitment to target knife crime and also to provoke behavioural change.
4. High visibility patrols tasked to knife crime hotspots
5. Regular intelligence led police/local authority weapon sweeps of open areas

Prepare

1. Increased tasking of DSU to increase intelligence on knife crime offences
2. Promulgation of intelligence & knife crime hot spots on briefings.
3. Bespoke Major Event planning/pre-op activity
4. Increased awareness & use of Op Domain to reduce inflammatory gang videos.
5. Detections & prosecutions scrutiny locally re KEC (reporting, investigation & detection)
6. Improving established links with local hospital A & E to identify victims of knife crime for Gang's Unit intervention.

Protect

1. Joint working with Safer Transport Command to deter knife carriers entering or moving around the Borough
2. Pro-active use of CBO's banning knife crime offenders from hotspots
3. Consideration of Mediation for all Gang crime offences.
4. Promotion of search arch and wand deployments at local schools
5. Intelligence led deployment of overt CCTV cameras in high risk areas

Pursue

1. Intelligence led hot-spot patrols with covert & overt units being directed by spotters using CCTV.
2. Proactive targeting of High Risk HKC's using stop/search & disruption by YE Gang's team.
3. Plotting of HKC's addresses and weapon sweeps of surrounding areas.
4. YE Fugitive Unit prioritise arrests of all KEC outstanding suspects.
5. Op Denver - Joint overt and covert operational activity with Trident & Viper Teams

Op Sceptre is the MPS operation targeting knife crime.

Enfield Op Sceptre results for May 2017:

Total Figures

Stop & Searches	45
Prisoners	28
Weapon Sweeps	28
Knives recovered	104
Other weapons	4
Wraps of Class A	114
Bags of Cannabis	4

Total Stop & Search	45
Positive searches	17

Total Prisoners	28
Knife arrests	12
Drugs arrests	5

Offence Categories

- ABH
- GBH
- Murder
- Possession of firearm
- PWITS Class A
- PWITS Nitrous Oxide
- Possession class B
- Possession offensive weapon
- Possession points/blades

Knife Bin at YE

Kitchen knives	80
Machete	1
Lock knife	1
Screwdriver	1
pair of scissors	1
knife sharpener	1

Weapon Sweeps	28
----------------------	-----------

Schools Presentations	3
------------------------------	----------

TP deployments	4
Positive TP	2

